



# **THE LATEST IN DIGITAL CONNECTIVITY & CONTINUOUS MONITORING**

for your HVAC equipment



## **GET THE EDGE with Carrier BluEdge**

With connectivity enabled by Abound HVAC Performance, you'll have the security of knowing that every facet of your investment is being carefully monitored, analyzed, and maintained by experts.



## CUSTOM PLANS, LEADING TECHNOLOGY

Carrier's innovative lifecycle solution includes customizable plans to ensure your equipment's optimum performance and longevity. All of the Carrier BluEdge service plans are backed by the human touch of expert technicians combined with the latest technology.

And with digital connectivity enabled by Abound HVAC Performance, you'll receive the benefits of continuous digital monitoring and proactive insights to see issues before they arise so you can protect your investment.

**ABOUND**  
HVAC Performance

*Enabling digital connectivity across all three of our BluEdge service agreement tiers:*

### PREVENTIVE

### FULL COVERAGE

#### CORE

24/7 emergency prioritization  
Continuous monitoring

#### ENHANCE

Periodic, predictive maintenance  
+ CORE SERVICES

#### ELITE

Comprehensive unscheduled repairs, parts & labor  
+ ENHANCE SERVICES



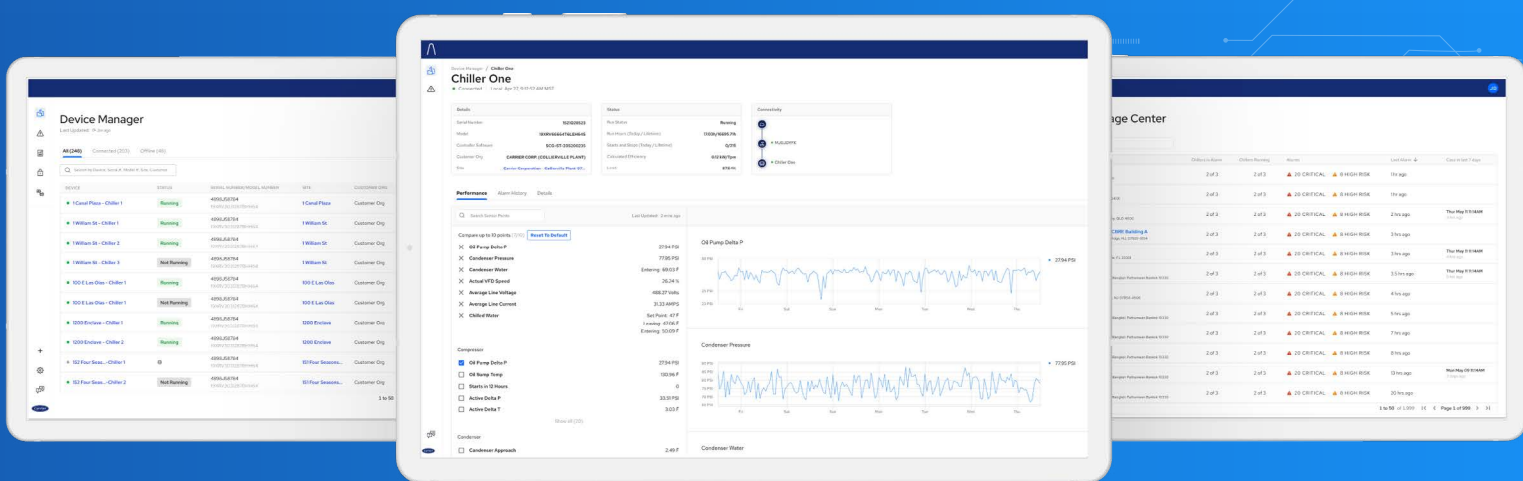
## THE CIRCLE OF CONNECTIVITY

*Here's how digital connectivity enabled by Abound HVAC Performance monitors and supports your commercial HVAC:*

1. Your chiller is connected.
2. Carrier's IoT platform collects your equipment data.
3. Carrier experts provide continuous monitoring of your chiller(s).
4. Carrier's experts take real-time actions on any alarms.\*
5. Carrier's technicians are dispatched\* to help maintain equipment uptime and protect your investment.

\*Conditions apply.

To learn more about Abound HVAC Performance and digital connectivity within BluEdge Service agreements, contact your local Carrier BluEdge® Service Representative.



DIGITAL CONNECTIVITY

## CAPABILITIES

Critical alarm and alert analysis

Secure wireless connectivity to Carrier's cloud-based platform

Consistent data transmission for visualizing real-time performance of HVAC equipment

Analytic packages and reports to support predictive maintenance

Ability to connect to both water- and air-cooled chillers

## KEY BENEFITS



### INCREASE UPTIME

- Proactive diagnosis and predictive maintenance
- Faster, more accurate service & repair



### MAXIMIZE PERFORMANCE & EQUIPMENT LIFE

- Greater system-wide reliability and longevity
- Real-time insights help contribute to sustainable outcomes



### IMPROVE BUDGETING & SCHEDULING

- Right service, right time
- Better cost avoidance



### REDUCE YOUR COSTS

- Save energy by maintaining optimal performance
- Avoid costly "surprise" repairs and parts failures



### GET PEACE OF MIND

- Lower the risk of equipment failure
- Right service at the right time



Visit  
[carrier.com/digitalconnectivity](https://carrier.com/digitalconnectivity)



Or call  
**+965 2 2066300**

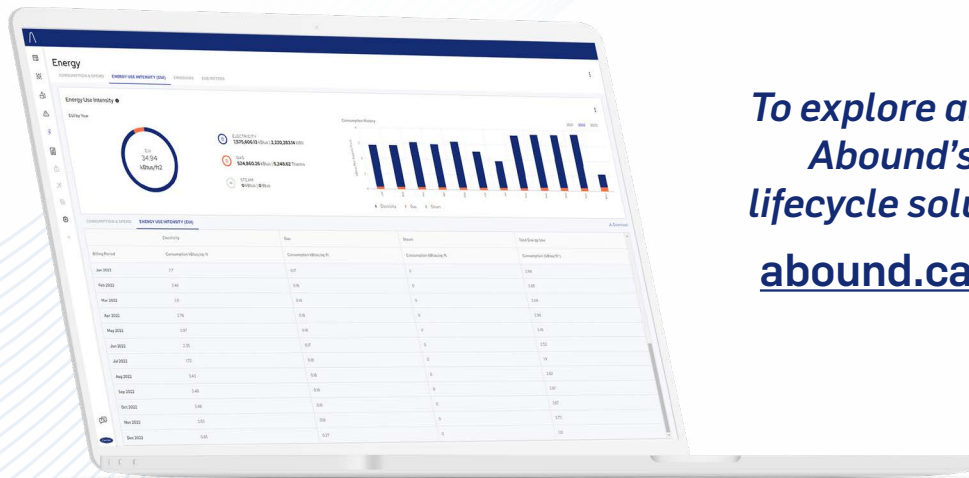


# ABOUND

## Looking for more options around asset management, health, and sustainability as you consider your BluEdge® service agreement?

Abound's suite of connected, lifecycle solutions allows you to see deeply and broadly across your entire portfolio of HVAC assets, act on prioritized decisions, and refine, adapt, and scale on a continual basis.

Learn how Abound can uncover what is hidden in your buildings and help decision makers address critical issues like energy efficiency, compliance, and occupant comfort and health.



To explore all of Carrier Abound's suite of lifecycle solutions, visit: [abound.carrier.com](https://abound.carrier.com)



Catalog No. 05-811-300155-01  
©2024 Carrier. All Rights Reserved.

