



Experience Carrier's Service Modernization Solutions

Our team of global service experts design, develop and implement customized solutions to solve our customers' most complex challenges. As your solutions partner, we apply today's technology in an innovative fashion to capture greater efficiencies and improved occupant experiences.



ENERGY EFFICIENCY

- Increase asset value
- Control your energy consumption
- Improve system performance



OPERATIONAL EFFICIENCY

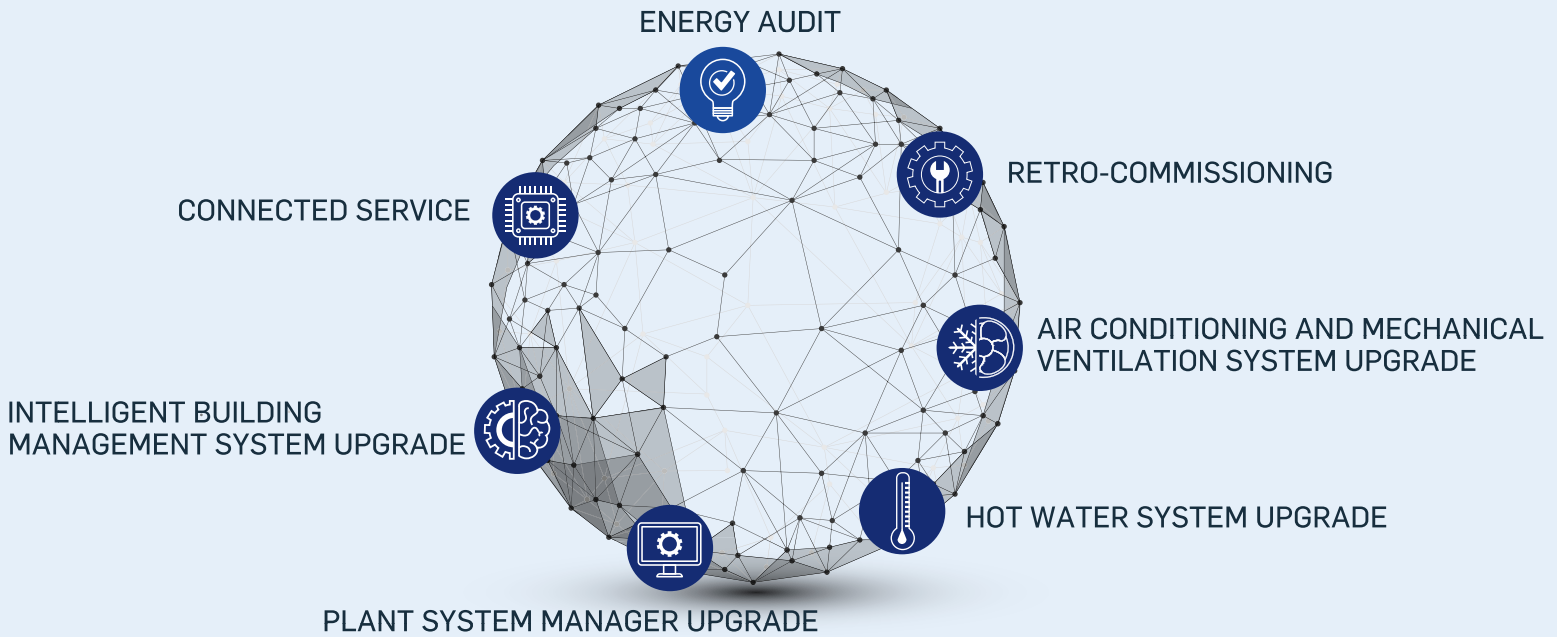
- Reduce system breakdown
- Extend the life span
- Reduce additional expenditures



ENVIRONMENTAL EFFICIENCY

- Improve occupant experience
- Reduce carbon emissions
- Utilize environmentally sustainable refrigerant

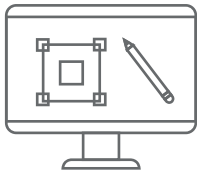
OUR SOLUTIONS



Our experts examine the building's current status in energy, operational and environmental efficiency, by leveraging the comprehensive suite of Carrier's technologies and services, to help create a more sustainable future. We provide innovative building design solutions to maximize overall efficiency while providing a strong return on investment.

With our expertise, achieve benefits and positive impacts in net earnings, key performance indicators and corporate social responsibility, within a short time span.

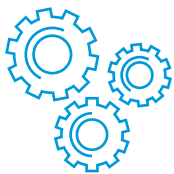
DESIGN



Our experts will review the operations and ensure that each system delivers maximum benefits to achieve savings and performance commitments.

We develop and obtain a measurement and verification of savings plan with customers, in order to ensure sustainable implementations.

IMPLEMENT



We plan and manage all implementation with minimal interruption to existing operations. This provides operational efficiency while new solutions integrate seamlessly with existing systems.

Our experts will help to commission your system and ensure optimal performance with maximum benefits.

SUSTAIN



We continuously monitor equipment performance and operating behaviors to sustain and improve the overall performance from the baseline. This helps to reduce operating and maintenance costs.

